

Why should you use UEM instead of Apple Configurator?



Apple Configurator is an application that easily allows admins to add devices to their organization's ABM account using an iPhone or a Mac device for Automated Device Enrollment.

Benefits of using Apple Configurator

- ✔ Update software, install applications and configuration profiles, configure wallpaper settings, export device information and essential files.
- ✔ Restore Mac devices with Apple silicon and Apple T2 Security Chip.
- ✔ Add devices not directly purchased from Apple, Apple authorized reseller or an authorized cellular carrier to ASM and ABM.
- ✔ Activate Apple devices with no internet connectivity by connecting them to a host Mac with an active internet connection while setting up the devices.

✔ Easily configure individual and multiple Apple devices by connecting it to a Mac device via a USB.



✔ Restore and manage devices with necessary configurations without needing to connect to Wi-Fi or cellular networks.

Apple Configurator vs. UEM: Which is better?

Apple Configurator	UEM
Requires a physical connection via a USB each time a device needs to be reconfigured, updated or simply assigned to a new user.	Does not require a physical connection.
Suitable only for small number of devices.	Suitable for enrolling and managing bulk number.
It is not an ideal choice for enrolling BYO devices since Apple Configurator requires devices to be wiped and restored to its factory settings when it is connected for the first time.	Easily enroll and manage a wide range of personal devices.

Benefits of using Hexnode UEM

1

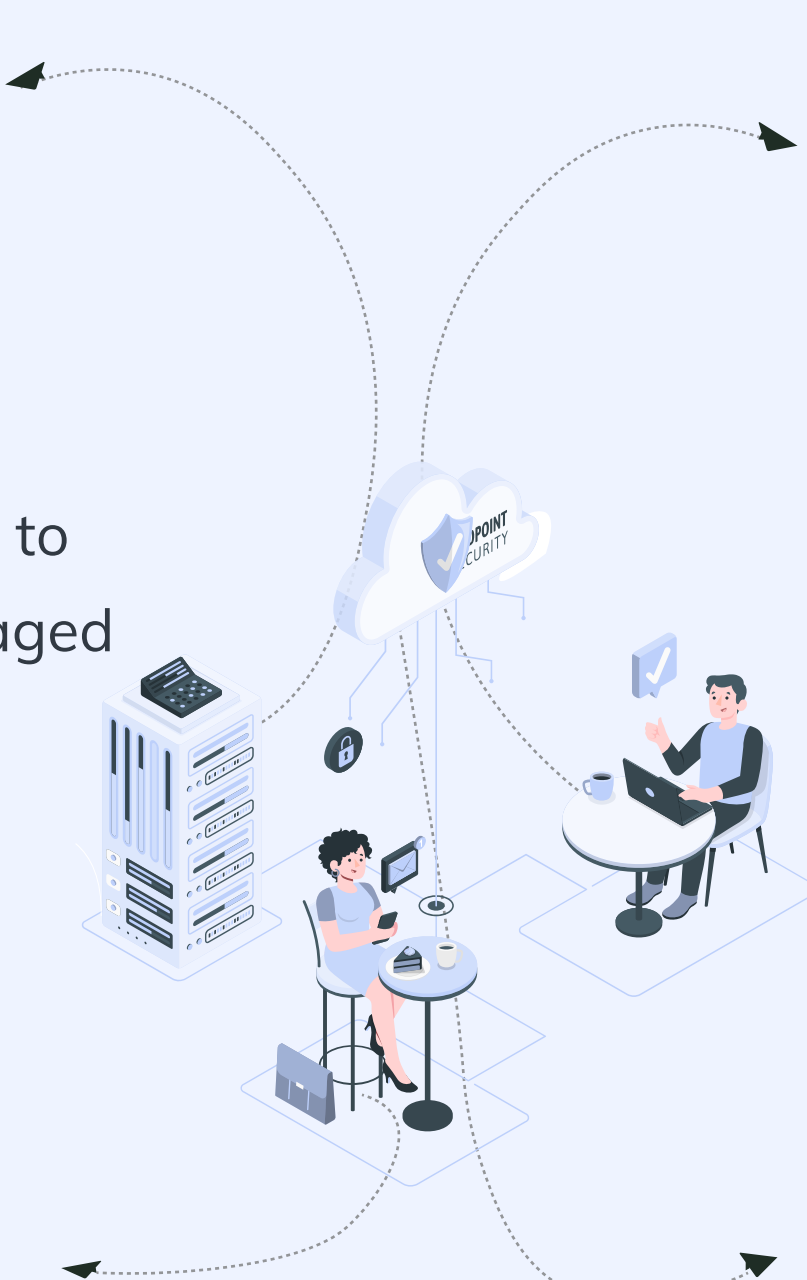
Easily manage large number of devices

Continually monitor devices connected to your corporate network. Get real time reports to check the compliancy of managed devices.

2

Simplified BYOD integration

Manage personal device of employees without wiping data and restoring device to factory settings.



3

Secure lost and stolen device with remote actions

Get real time location updates and protect confidential data by initiating remote lock and wipe from the UEM console when the device goes missing.

4

Enhanced device and data protection

Protect sensitive data by restricting various device settings. Disable a number of file sharing options to ensure integrity of critical data stays secure.