

## Anywhere Enterprise: Work from anywhere and everywhere



**Anywhere enterprise** describes an organization that utilizes technology, team structure, procedures, and tools to empower a dispersed workforce and provide services to a global client base through a distributed infrastructure.



### Employee preference

# 44%

of employees prefer a workplace in which they can work from anywhere rather than going fully remote.<sup>1</sup>

### Productivity

# 52%

of executives agree that the average employee productivity has increased with the adoption of a work from anywhere model.<sup>2</sup>

### Work-life balance

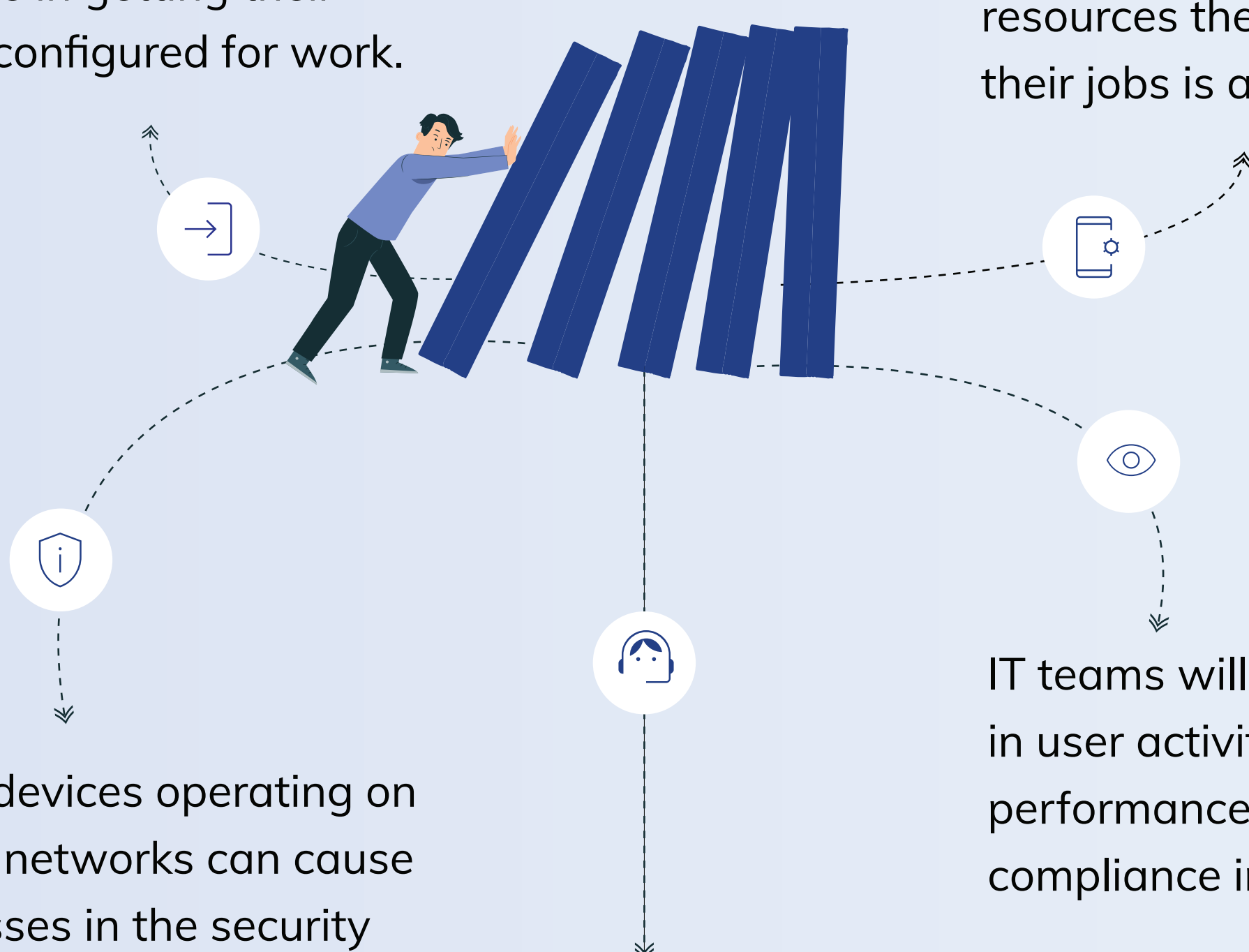
# 81%

percentage of people agree that being able to work from anywhere would make them better able to manage work-life conflict.<sup>3</sup>

## However, there are some challenges that organizations have to address in the case of a distributed workforce:

Onboarding remote employees pose a significant challenge in getting their devices configured for work.

Ensuring employees have access to all the apps and resources they need to do their jobs is a real problem.



Remote devices operating on different networks can cause weaknesses in the security infrastructure of the organization.

IT teams will require visibility in user activity, network performance, and device compliance information.

Troubleshooting remote devices with traditional methods, such as emails and phone calls is tedious for IT admins.

To empower your distributed workforce, you need a robust device management solution that can help you overcome obstacles around productivity and employee experience.

Hexnode provides all the necessary capabilities for your Anywhere Enterprise to operate smoothly every time.



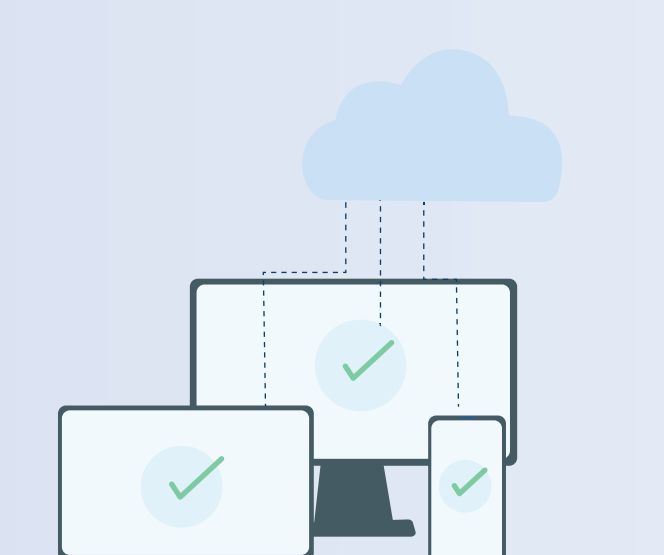
### Security management

Secure data on the device with advanced network security rules while ensuring secure and seamless access to corporate data.



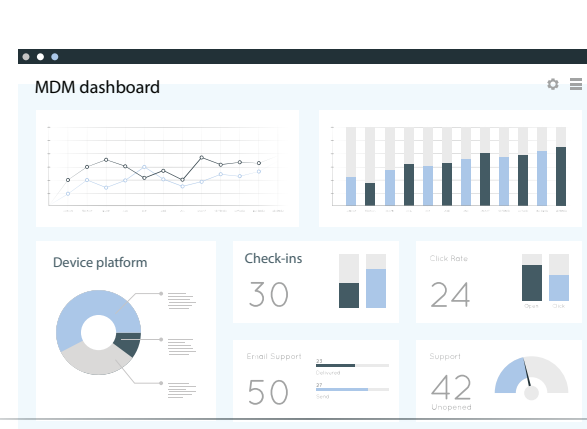
### Remote troubleshooting

Troubleshoot glitches at the user end and provide technical support using features such as remote view.



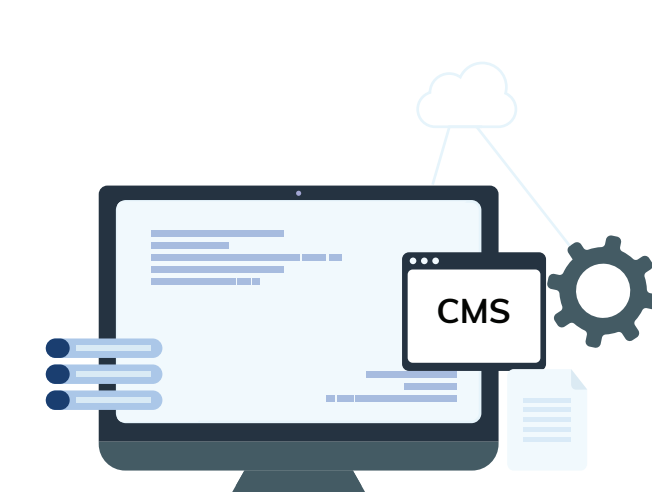
### Zero-touch device enrollment

Zero-touch enrollment methods in Hexnode let you preconfigure devices on the cloud to be ready for enterprise use when powered on for the first time.



### MDM dashboard

Hexnode's dashboard gives a bird's eye view onto real-time status of all enrolled devices and users in a single platform.



### Remote content management

Hexnode provides complete governance over distribution, sharing and collaboration of content. It enables the delivery of corporate resources to multiple devices, simultaneously.

With all these capabilities and many more, Hexnode will be just the tool you need to power your distributed workforce.