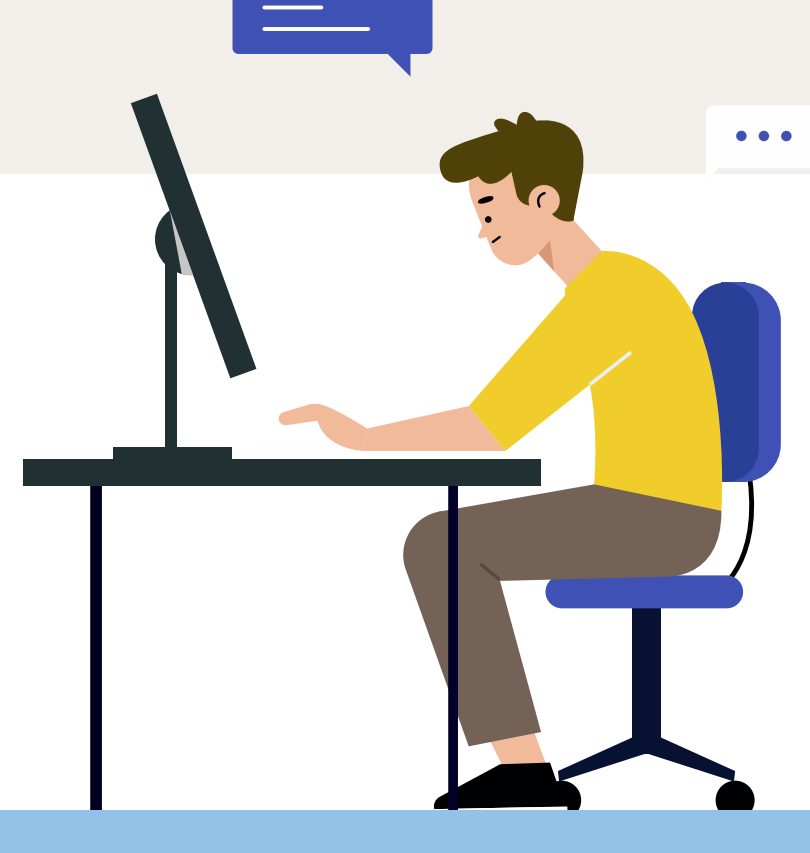


How to use Hexnode Gateway for macOS

Migrate your macOS devices into Hexnode seamlessly



Why migrate?

As technology constantly evolves, your company might outgrow the current UEM provider's capability, and you might need a more feature-rich UEM solution.

Hexnode for macOS?

Hexnode UEM provides complete mobility management software that works with all popular operating systems, including macOS. It allows the admin to manage, monitor, and enforce device policies and includes all the critical macOS management features.



Does that mean I'll have to do a device wipe and lose all my data?

Absolutely not!
The Gateway application remotely migrates macOS devices to Hexnode UEM without performing a device wipe.



STEPS

1

- Login to your Hexnode portal and navigate to **Enroll > PlatformSpecific > macOS > Migrate to Hexnode**.
- Now, click on **Generate a new configuration file**.

Provide a name for the configuration file and select the enrollment type;

- Adaptive: automatically detects the device capabilities and initiates Automated Device Enrollment (for DEP devices) or Device Enrollment (Manual) as suited.
- Device Enrollment (Manual): forces manual Device Enrollment. Not recommended as this reduces the device management capabilities.

2

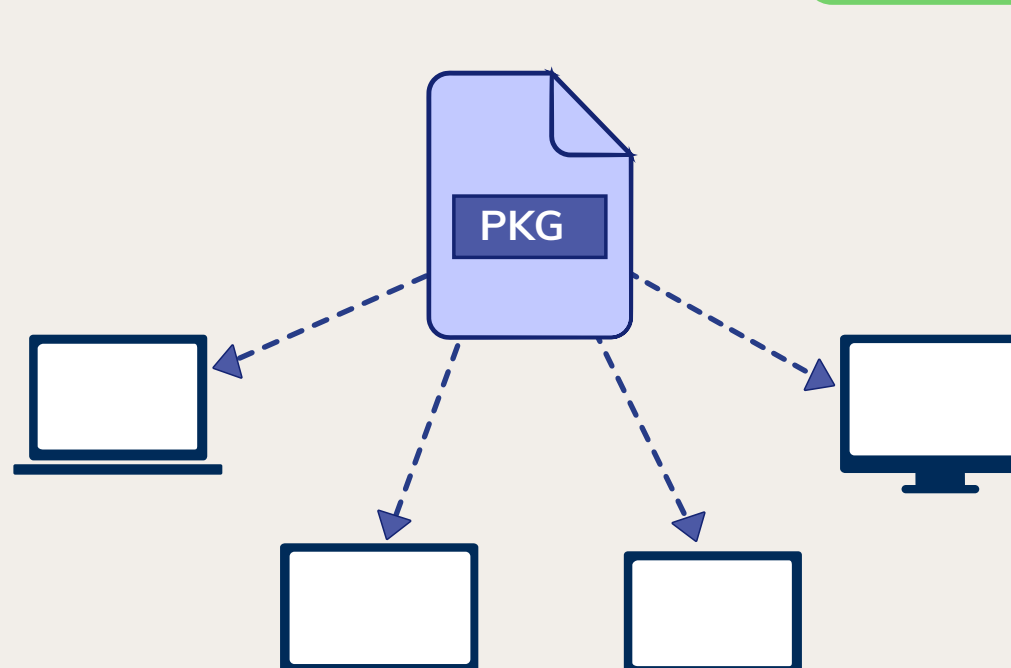
Add Wifi and VPN settings to the configuration file

3



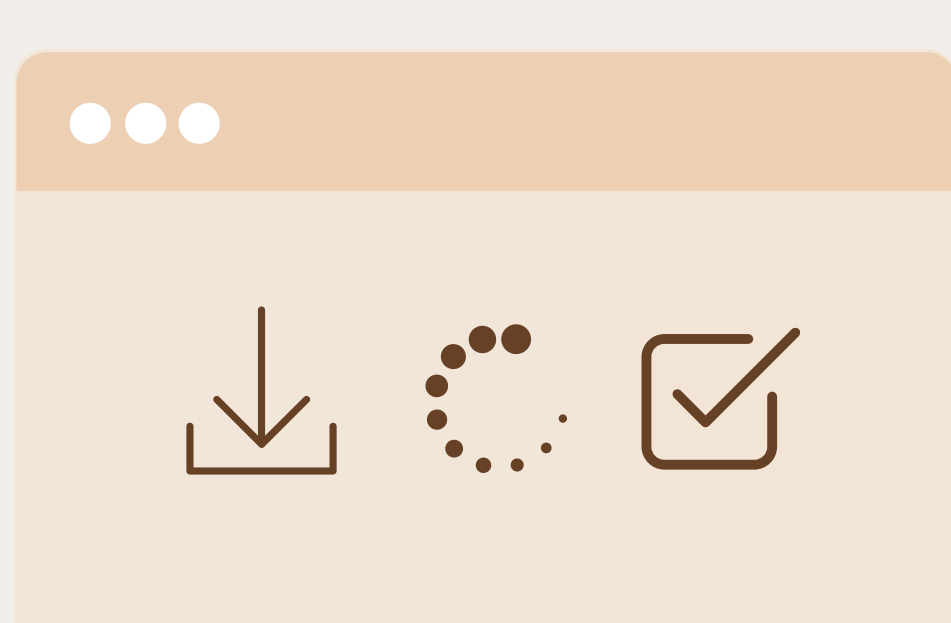
Generate the configuration file and deploy it to the target devices using Hexnode or your current MDM.

4



After installing the PKG file, the Hexnode Gateway app opens up on the device.

5



Check Points Reached

6

Choose your next steps (wisely) based on your current device scenario

Enrolled in MDM

DEP



- Initiate disenrollment from the current MDM.
- Reassign the device in the DEP portal to an MDM server associated with this Hexnode UEM console.
- Sync the device with Hexnode portal from Admin > Apple Business > Apple DEP > DEP Devices.
- Click Migrate MDM Profile from Hexnode Gateway app

DEP



- Initiate disenrollment from the current MDM.
- Click Enroll on the Hexnode Gateway app.
- The MDM profile will need approval of user before installation on macOS 10.15+.

Not enrolled in MDM

DEP



- Reassign the device in the DEP portal to an MDM server associated with this Hexnode UEM console.
- Sync the device with Hexnode portal from Admin > Apple Business > Apple DEP > DEP Devices.
- Click Migrate MDM Profile from the Hexnode Gateway app

DEP



- Click Enroll on the Hexnode Gateway app and initiate the enrollment.
- The MDM profile will need approval of user before installation on macOS 10.15+.